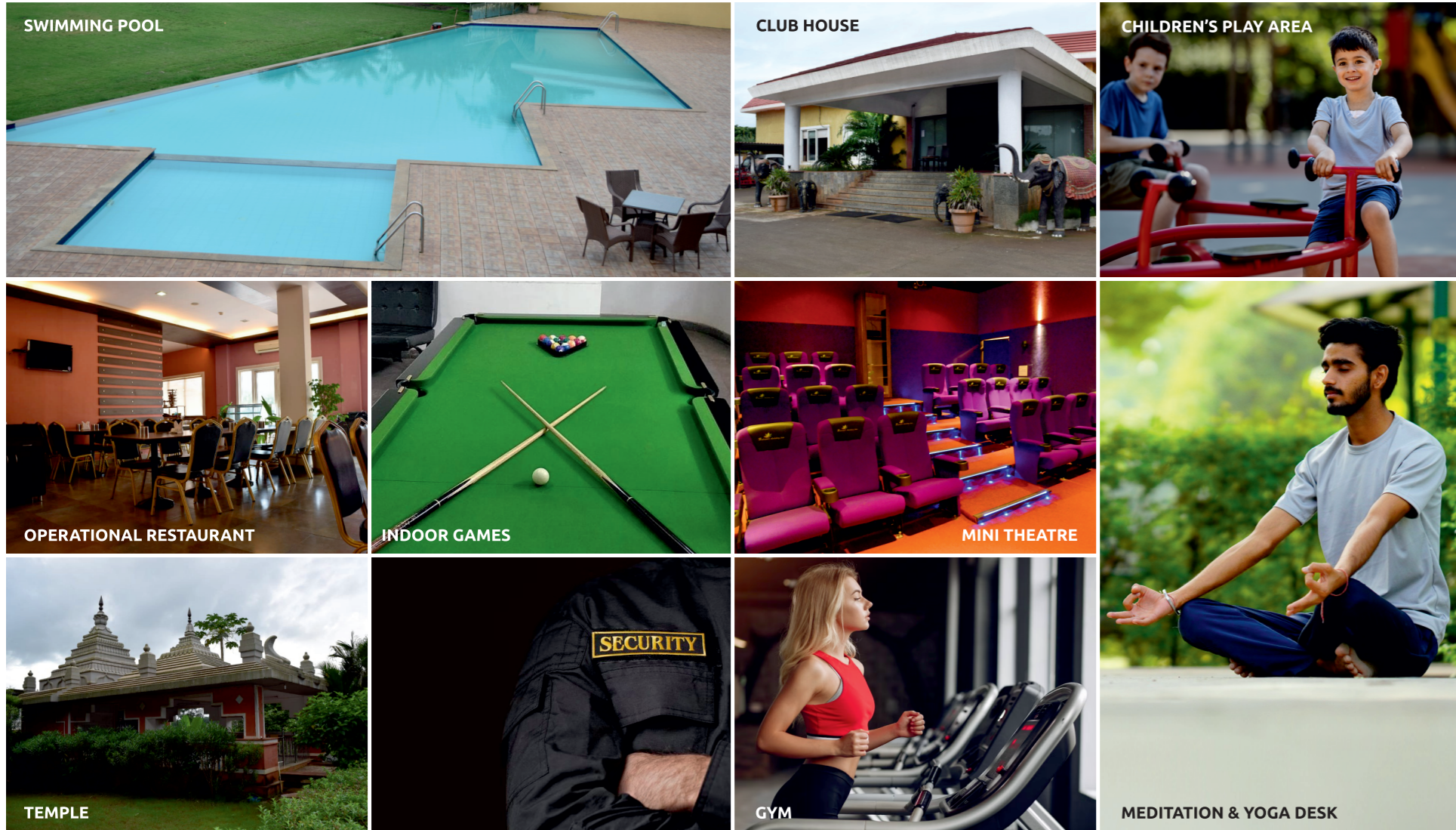


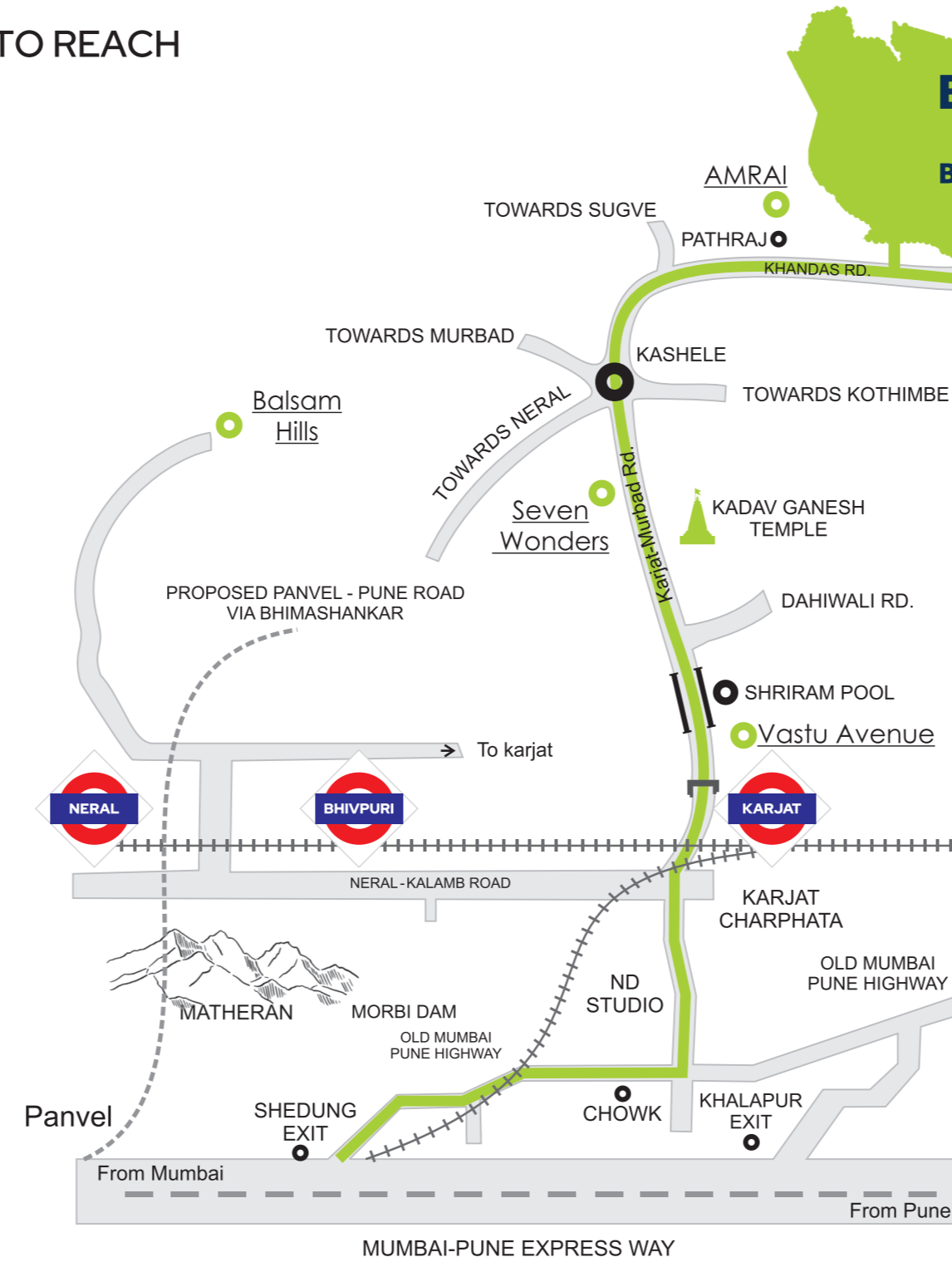
# BHIMASHANKAR HILLS

Perched amidst the serene and tranquil landscapes of Bhimashankar Hills, the Bliss Studio is a beautiful confluence of coziness and luxury. Set against the majestic Sahyadri Range backdrop, the Bliss Studio offers a much-needed escape from the noisy and fast-paced urban life. Bliss Studio, proudly dwelling in the heart of nature, flaunts aesthetically designed accommodations that are testimonials of elegance and coziness.



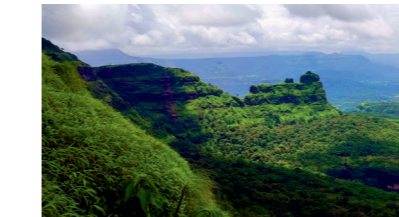
Each luxury weekend home is artistically designed so that you can have the utmost pleasure in your leisure. Gazing through a panoramic window frame is truly a breathtaking experience as the surrounding hills exhibit pure magnificence one can only imagine.

## HOW TO REACH



## BLISS STUDIO AT BHIMASHANKAR HILLS

### NEARBY LOCATIONS:



BHIMASHANKAR MOUNTAIN



TREKKING POINT



TUNGI FORT



MATHERAN

Presented by  
Pioneers and leaders in the 2<sup>nd</sup> Home segment  
**soft corner**  
transparent deals..personal touch...  
MahaRERA Reg. No. A5170000654 | Available at Website: <http://maharera.mahaonline.gov.in>

Add : Softcorner House, Dr. Moose Road, Talav pali,  
Opp. Nauka Vihar, Thane (W) 400 601  
Tel. : 022-2539 4865 / 2539 4866 | Mob : 9223592186  
Email : [contact@softcornerindia.com](mailto:contact@softcornerindia.com)  
[www.softcornerindia.com](http://www.softcornerindia.com) | sms SOFT to 56161



Disclaimer: The plans, specification, images and other details herein are only indicative and subject to approval of the concerned authorities. The Developer / Owner reserve the right to change any or all of these in the interest of the development, without prior notice or obligation. Artist's impressions are used to illustrate amenities, specification, images and other details and these may be applicable to select apartments only. Tolerance of +/-3% is possible in the unit's area on account of design and construction variance. All brands stated are subject to final decision of the project architect. This printed material does not constitute an offer and/or contract of any type between the Developer/ Owner and the recipient. No booking or allotment shall be deemed to have been made on the basis of this printed material. Any Purchaser / Lessee of this development shall be governed by the terms and conditions of the agreement for sale/ lease entered into between the parties, and no details mentioned in this printed material shall in any way govern such transaction unless as may be otherwise expressly provided in the agreement for sale/ lease by the Developer/Owner. The Developer/ Owner does not warrant or assume any liability or responsibility for the accuracy or completeness of any information contained herein. If any changes are to be incorporated in future, it will be done with prior approval from MahaRERA.

# BLISS STUDIO

MahaRERA Reg. No. P5200000003 | Available at website:<http://maharera.mahaonline.gov.in>

## AT BHIMASHANKAR HILLS KARJAT

# EXPERIENCE THE RESORT LIFE



# KARJAT'S MOST SOUGHT-AFTER LUXURY WEEKEND HOMES

THE BIGGEST EVER WEEKEND HOME PROJECT



Bliss studio is a well planned community in the midst of nature. A perfect destination for your second home. The acres of pure Bliss surely is affordable with all modern facilities & amenities, ensuring a great lifestyle, that shall brighten up your's & your family stay.



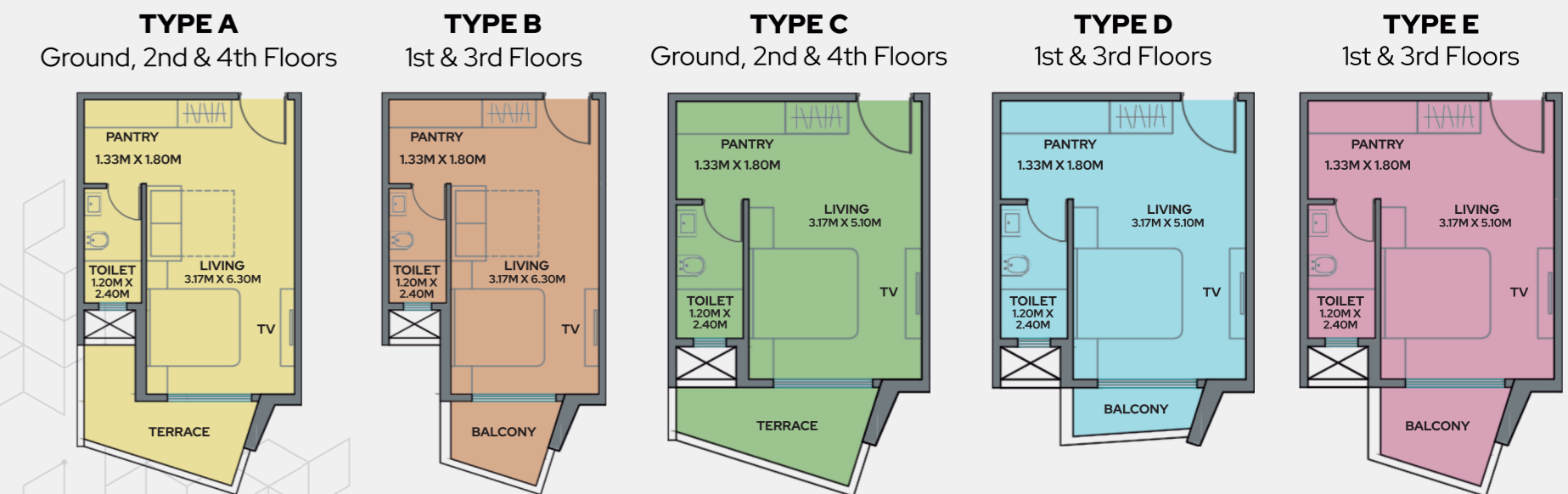
## Situated on a hill top table land at 325mt above mean sea level

So set yourself free in the exotic location of Karjat & experience the resort living in 'Bliss Studio' where your home overlooks the majestic Bhimashankar Hills, where the crystal clear swimming pool unwinds you from your daily routine, where a stroll along the canal refreshes the soul, where the lush green landscape reflect to sparkle your eyes, where the chirping of birds help you to meditate & you enjoy the lavish amenities that set your holiday mood, nothing but in the blissful nature.

## BLISS STUDIO AMENITIES

- Grand Entrance • Amphitheatre • Kids Play Area
- Tree seating pods • Parking • Swimming Pool • Yoga/Meditation Decks • Stepped Garden
- Flowering Trees • Green Lawn

## FLOOR PLANS



ENTRANCE LOBBY



LUXURIOUS STUDIO APARTMENT



AMPHITHEATRE



SKY LOUNGE



YOGA/MEDITATION DECKS